



ENSURE is a cooperative project of 14 local and regional bodies from the European Union, Montenegro and Serbia. It is co-funded by the Europe for Citizens program, and will continue until July 2019.

This brochure was created to show you who are the 14 the partners of the ENSURE Network. Among us you will find: public officers, citizens, volunteers, policy makers, and experts representing local and regional authorities, federations of public bodies, a University, and Civil Society Organizations. The project Leader is the Development Information Center Slovenska Bistrica. We are proud to show you the great diversity that builds up the ENSURE Network!



Co-funded by the  
Europe for Citizens Programme  
of the European Union

ENSURE stands for the European Network for the Cohesion and Solidarity in Rural Areas. As partners of this Network, we would like to increase the relevance of European policies in our local areas, as well as raise knowledge on European citizenship. The project addresses day-to-day issues which are important for rural citizens, such as local development, cross-border mobility, or food security.

We believe that by bringing up issues that acquire great interest among our citizens, this project can hit questions which are burning in Europe, just like the Euroscepticism is.

We have planned 6 international ENSURE Events that will take place in Greece, Spain, Croatia, Slovenia and Italy. Each partner will then organise a follow-up local action in their country. There will also be a Webinar and a final publication available and open for everyone interested.

Keep up with our fanpage for the latest updates:  
<https://www.facebook.com/ensurenetwork/>

Europe for Citizens Programme is for everybody who would like to better understand the EU, its history and diversity. The programme fosters European citizenship, and it aims at improving conditions for civic and democratic participation at EU level.

Find out more about Europe for Citizens:  
[https://eacea.ec.europa.eu/europe-for-citizens\\_en](https://eacea.ec.europa.eu/europe-for-citizens_en).

**WHERE ARE YOU FROM?**

Slovenska Bistrica, Slovenia

**WHAT DOES YOUR INSTITUTION DO?**

It boosts the development of entrepreneurship and tourism in Slovenska Bistrica.

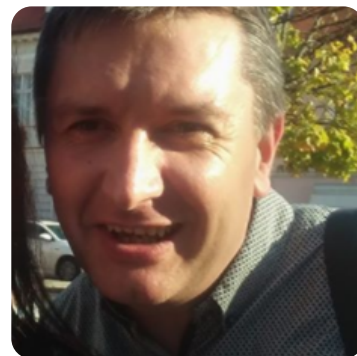


**WHAT IS SPECIAL ABOUT YOUR LOCAL AREA?**

Natural heritage, wine productions, beekeeping.

**COORDINATOR'S NAME**

Tomaž Repnik



**CONTACT**

tomaz.repnik@ric-sb.si

**WWW / FB**

<http://ric-sb.si/>  
<http://www.tic-sb.si>  
<https://www.facebook.com/RICslovenskabistrica/>

**LOCAL ACTION GROUP (LAG) „CENTRAL ISTRIA”**  
**LOKALNA AKCIJSKA GRUPA (LAG) „SREDIŠNJA ISTRA”**

**WHERE ARE YOU FROM?**

Pazin, Istria, Croatia

**WHAT DOES YOUR INSTITUTION DO?**

Implementing EU projects with the aim of an overall rural development of the area.



**WHAT IS SPECIAL ABOUT YOUR LOCAL AREA?**

A unique blend of the coast and the inlands of the Istrian county which is known for its beautiful nature, rich cultural heritage and unique gastronomic offer.

**COORDINATOR'S NAME**

Roberta Krivičić



**CONTACT**

roberta@lag-sredisnjaistra.hr

**WWW / FB**

<http://lag-sredisnjaistra.hr/>  
<https://www.facebook.com/LagSredisnjaistra/>

**WHERE ARE YOU FROM?**

Volos/Thessalia, Greece

**WHAT DOES YOUR INSTITUTION DO?**

Academical education and research.

**WHAT IS SPECIAL ABOUT YOUR LOCAL AREA?**

Natural beauty, gastronomy, cultural activity, active univerty community.

**COORDINATOR'S NAME**

Antoniadis Dimitrios

**COORDINATOR'S NAME**

Katsoulas Nikolaos

**CONTACT**

dgantoniadis@gmail.com  
nkatsoul@uth.gr

**WWW / FB**

<http://www.uth.gr/>  
<https://www.facebook.com/nikolaos.katsoulas>

**ASSOCIATION ALESSANDRO BARTOLA-STUDIES AND RESEARCH ON ECONOMICS AND AGRICULTURAL POLICY****ASSOCIAZIONE ALESSANDRO BARTOLA-STUDI E RICERCHE DI ECONOMIA E DI POLITICA AGRARIA****WHERE ARE YOU FROM?**

Ancona, Marche, Italy

**WHAT IS SPECIAL ABOUT YOUR LOCAL AREA?**

Industrial and tourist harbor, seaside resort, university campus and industrial park. The province of Ancona is also a producer of wines (Lacrima di Morro d'Alba, Rosso Conero, Verdicchio), extra virgin olive oil and honey.

**WHAT DOES YOUR INSTITUTION DO?**

The Association "Alessandro Bartola" is a non-profit organization, it aims to promote and carry out studies, research, scientific and cultural activities concerning agriculture and its interrelationships with food and agricultural system, territory, environment, and development of local communities.

**COORDINATOR'S NAME**

Franco Sotte

**CONTACT**

f.sotte@univpm.it

**WWW / FB**

[www.agrregionieuropa.it](http://www.agrregionieuropa.it)  
<https://www.facebook.com/agrregionieuropa/>



# LIGATNE MUNICIPALITY LĪGATNES NOVADA DOME

## WHERE ARE YOU FROM?

Ligatne, Vidzeme Region,  
Latvia

## WHAT DOES YOUR INSTITUTION DO?

Municipality is responsible for  
the wellbeing of the local  
inhabitants.

## WHAT IS SPECIAL ABOUT YOUR LOCAL AREA?

- Industrial heritage -  
"Historical center of Ligatne  
Paper Mill village".
- Sandstone cliff exposures  
and caves.
- Ligatne Nature Trails



## COORDINATOR'S NAME

Daina Terauda



## CONTACT

Daina.terauda@ligatne.lv

## WWW / FB

www.ligatne.lv  
<https://www.facebook.com/LigatnesNovads>  
<https://twitter.com/LigatnesNovads>

# MUNICIPALITY FEDERATION OF MADRID FEDERACIÓN DE MUNICIPIOS DE MADRID

## WHERE ARE YOU FROM?

Madrid Province. España

## WHAT IS SPECIAL ABOUT YOUR LOCAL AREA?

All the areas of municipal  
management, highlighting  
tourism.

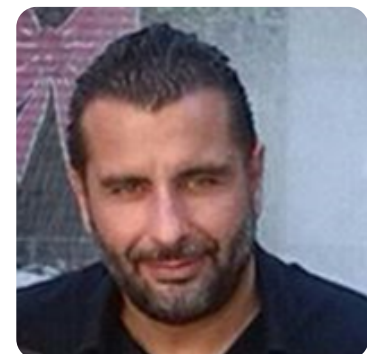
## WHAT DOES YOUR INSTITUTION DO?

Represent the interests of the  
municipalities in other public  
administrations. Training of  
technicians and councilors.  
Management of projects of  
local interest.



## COORDINATOR'S NAME

José Barcia



## CONTACT

gs@fmmadrid.org

## WWW / FB

www.fmmadrid.org  
<https://www.facebook.com/fmmadrid.org/>

**WHERE ARE YOU FROM?**

Hranice, Czech Republic

**WHAT IS SPECIAL ABOUT YOUR LOCAL AREA?**

Nature, river, the deepest abyss in the word, cultural heritage, traffic intersection.

**WHAT DOES YOUR INSTITUTION DO?**

Development of our region in different areas: tourism, infrastructure, local products, education, environmental, cooperation with other institutions.

**COORDINATOR'S NAME**

Michaela Škrobánková



**CONTACT**

skrobankova@hranickarozvojova.cz

**WWW / FB**

www.regionhranicko.cz



**WHERE ARE YOU FROM?**

Alba County, Center Region, Romania

**WHAT IS SPECIAL ABOUT YOUR LOCAL AREA?**

Natural and cultural heritage, multiculturalism, Transylvania's Wine Land.

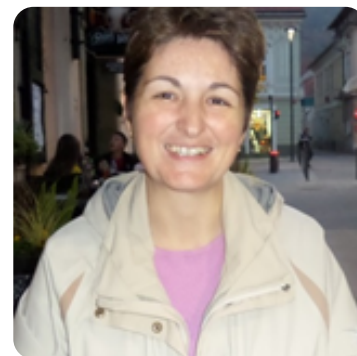
**WHAT DOES YOUR INSTITUTION DO?**

It supports the socio-economic development of urban and rural areas in Alba county.

**ALBA COUNTY COUNCIL**  
**CONSILIUL JUDETEAN ALBA**

**COORDINATOR'S NAME**

Marilena Moga



**CONTACT**

programe@cjalba.ro

**WWW / FB**

<http://www.cjalba.ro>  
<http://www.cjalba.ro/english/>  
<https://facebook.com/ConsiliulJudeteanAlba>



# MUNICIPALITY TRUDOVETS, BOTEVGRAD MUNICIPALITY, SOFIA DISTRICT КМЕТСТВО ТРУДОВЕЦ, ОБЩИНА БОТЕВГРАД, СОФИЯ ОБЛАСТ

## WHERE ARE YOU FROM?

Pravets, Sofia district,  
Bulgaria

## WHAT DOES YOUR INSTITUTION DO?

Municipality Trudovets fosters the participation of Youth club "People to People" at Community Culture Centre – Chitalshite "Rakitin" – in Erasmus+, EVS and Europe for citizens projects.



Erasmus+ Youth exchange in Romania

## WHAT IS SPECIAL ABOUT YOUR LOCAL AREA?

Historical heritage, Agrarian enterprises for vegetables export, Grammer Int. plant for automobile seats. Support of educational, cultural and youth policies in EU cooperation.



Community Culture Centre Erasmus+ TC in Italy

## COORDINATOR'S NAME

Maya Arnaudova



## CONTACT

mayarnaudova@gmail.com

## WWW / FB

www.trudovec.com

## WHERE ARE YOU FROM?

Poland, Łask

## WHAT IS SPECIAL ABOUT YOUR LOCAL AREA?

Festival of Roses, Kolumna Garden Town, Łask Commune serves as a tourist attraction through, the Grabia River Valley, Natural Heritage



## WHAT DOES YOUR INSTITUTION DO?

Łask promotes their natural values and support the rose agriculture.

## COORDINATOR'S NAME

Aleksandra Henke



## CONTACT

a.henke@lask.pl

## WWW / FB

www.lask.pl

## LASK COMMUNE GMINA ŁASK

**WHERE ARE YOU FROM?**

Montenegro

**WHAT DOES YOUR INSTITUTION DO?**

Our institution is local self-government body whose task is to meet the different needs of Kolašin inhabitants. We strive to improve the economic, tourist and natural potentials of municipality.



**WHAT IS SPECIAL ABOUT YOUR LOCAL AREA?**

Ski-resort Kolašin 1450  
(2-3 SPECIAL THINGS)

National park „Biogradska gora”, one of the last virgin forest in Europe

Many tourist manifestation:  
Tango camp, Mountain camp,  
Festival of alternative theatre „Korifej”, Basketball camp.



**COORDINATOR'S NAME**

Balša Cvetković



**CONTACT**

[balsa.cvetkovic@opstinakolasin.me](mailto:balsa.cvetkovic@opstinakolasin.me)

**WWW / FB**

[www.kolasin.me](http://www.kolasin.me)

**KISTARCSA CULTURAL ASSOCIATION**  
**KISTARCSAI KULTURÁLIS EGYESÜLET**

**WHERE ARE YOU FROM?**

Kistarcsa, HU01, Hungary

**WHAT DOES YOUR INSTITUTION DO?**

We organize cultural programmes, beautify the town, cooperate with foreign organizations.



**WHAT IS SPECIAL ABOUT YOUR LOCAL AREA?**

We are in the agglomeration very close to Budapest, our settlement is officially town but really is a large village, here was the largest Hungarian internment camp.

**COORDINATOR'S NAME**

Ferenc Kereszti



**CONTACT**

[kike@kike.hu](mailto:kike@kike.hu)

**WWW / FB**

[www.kike.hu](http://www.kike.hu),  
<https://www.facebook.com/KistarcsaiKulturalisEgyesulet/>



# EUROPEAN AFFAIRS FUND OF AP VOJVODINA FOND „EVROPSKI POSLOVI” AP VOJVODINE

## WHERE ARE YOU FROM?

Novi Sad, Autonomous  
Province of Vojvodine,  
Republic of Serbia

## WHAT IS SPECIAL ABOUT YOUR LOCAL AREA?

Multicultural heritage, Novi  
Sad - European Capital of  
Culture 2021 and European  
Youth Capital 2019, EXIT music  
festival, gastronomy, wine  
production, IT expertise,  
quality arable land.



## WHAT DOES YOUR INSTITUTION DO?

Development of joint projects  
with regional and other  
European partners related to  
use the EU pre-accession  
funds; cooperation with  
leading European and  
international institutions and  
promotion of European values.

## COORDINATOR'S NAME

Milan Čežek



## CONTACT

cezек@vojvodinahouse.eu

## WWW / FB

www.vojvodinahouse.eu

https://www.facebook.com/  
epapv/

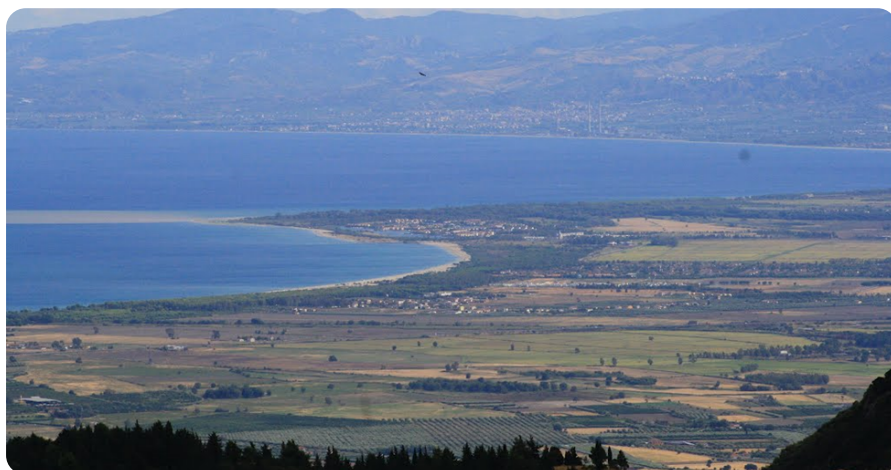
## ASSOCIATION OF SOCIAL PROMOTION FUTURO DIGITALE ASSOCIAZIONE DI PROMOZIONE SOCIALE FUTURO DIGITALE

## WHERE ARE YOU FROM?

Terranova da Sibari, Calabria,  
Italy

## WHAT IS SPECIAL ABOUT YOUR LOCAL AREA?

Olive Oil production, Orange  
harvest, Natural and Historical  
Heritage.



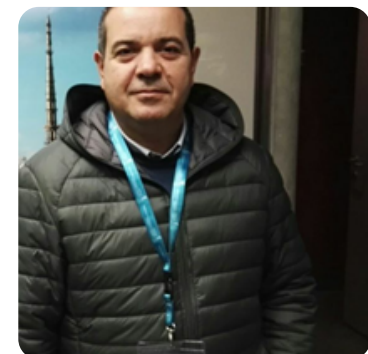
Piana di Sibari, breath-taking panorama

## WHAT DOES YOUR INSTITUTION DO?

Foster youth entrepreneurship  
in the rural, cultural and  
touristic fields, contributing to  
a sustainable development of  
society, promoting European  
values and objectives.

## COORDINATOR'S NAME

VINCENZO APA



## CONTACT

v.apa@futurodigitale.org

## WWW / FB

http://www.futurodigitale.org  
/en/

https://www.facebook.com/  
ssociazionefuturodigitale

# GOSIA WOCHOWSKA, PhD

Project Manager on behalf of the Leader of the project - the Development Information Center Slovenska Bistrica. Gosia is a specialist of EU policies and an experienced educator and trainer of intercultural learning. She is involved in policy making processes in Europe. You can email Gosia if you have any questions regarding Europe for Citizens projects or European citizenship.



## CONTACT

malgorzata.wochowska@gmail.com

## REPRESENTATIVES OF ENSURE PROJECT PARTNERS DURING THE FIRST EVENT IN SLOVENSKA BISTRICA, 18-20 OCTOBER 2017.

